

# DHIS 2 and Family Planning

Nicola Hobby, Director of Service Delivery

BAO Systems on behalf of University of Oslo



**BAO**  
SYSTEMS



UiO : **University of Oslo**

- 
- A woman with dark hair pulled back, wearing a white lab coat, stands in a clinical or office setting. She is smiling and looking towards the camera. Her hands are resting on the back of a wooden chair. The background shows a white wall, a window with blinds, and some office furniture. A bottle of Vitamin A (Retinol) is visible on a desk in the lower right corner.
- DHIS 2 Overview
  - National and NGO Coverage
  - UiO Role
  - FP Data
  - Opportunities and Challenges

# DHIS 2 Features

Capture, management, and analysis of data

Highly flexible and configurable platform with a wide variety of use cases

Free and open source software

Extensible through Web APIs and other applications

New major versions released each quarter

# Generic Data Models



## Aggregate Data

- Immunization doses given
- People counselled on family planning
- Refugees supported



## Event Data

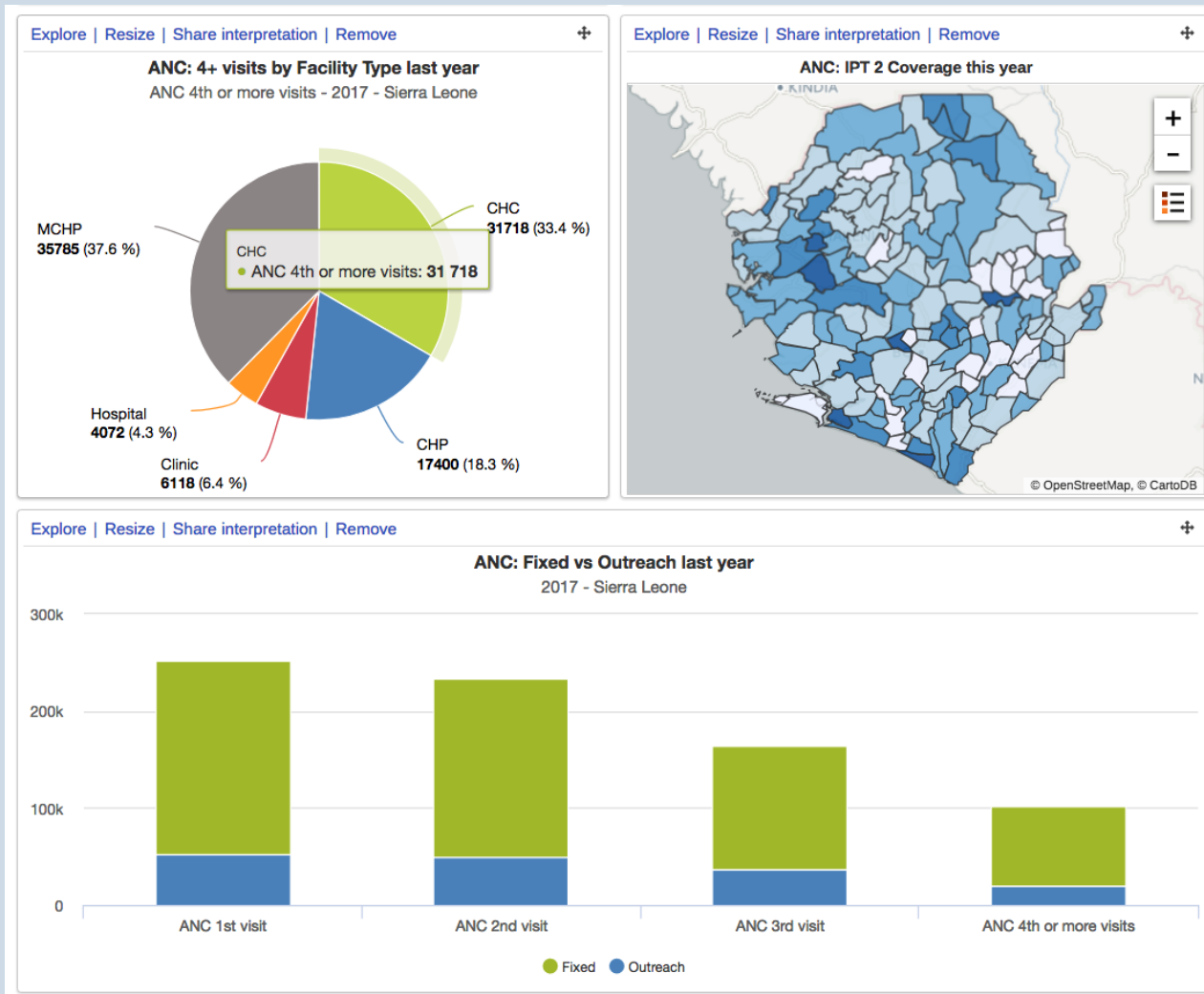
- Site assessments
- Trainings
- Educational outreach events



## Tracking Data

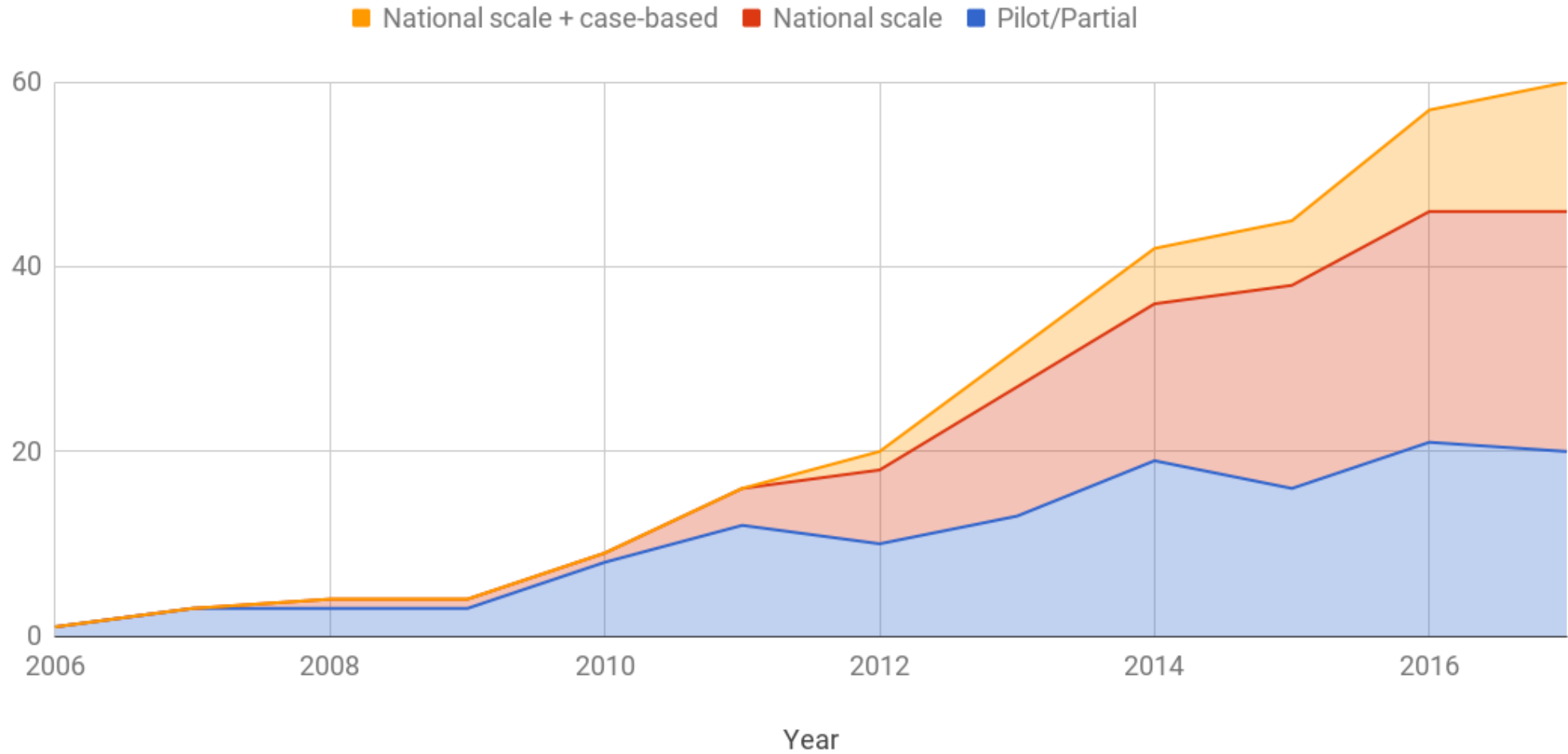
- ANC visits
- Equipment, drugs, & stock
- Water and sanitation certification

# Integrated analytics

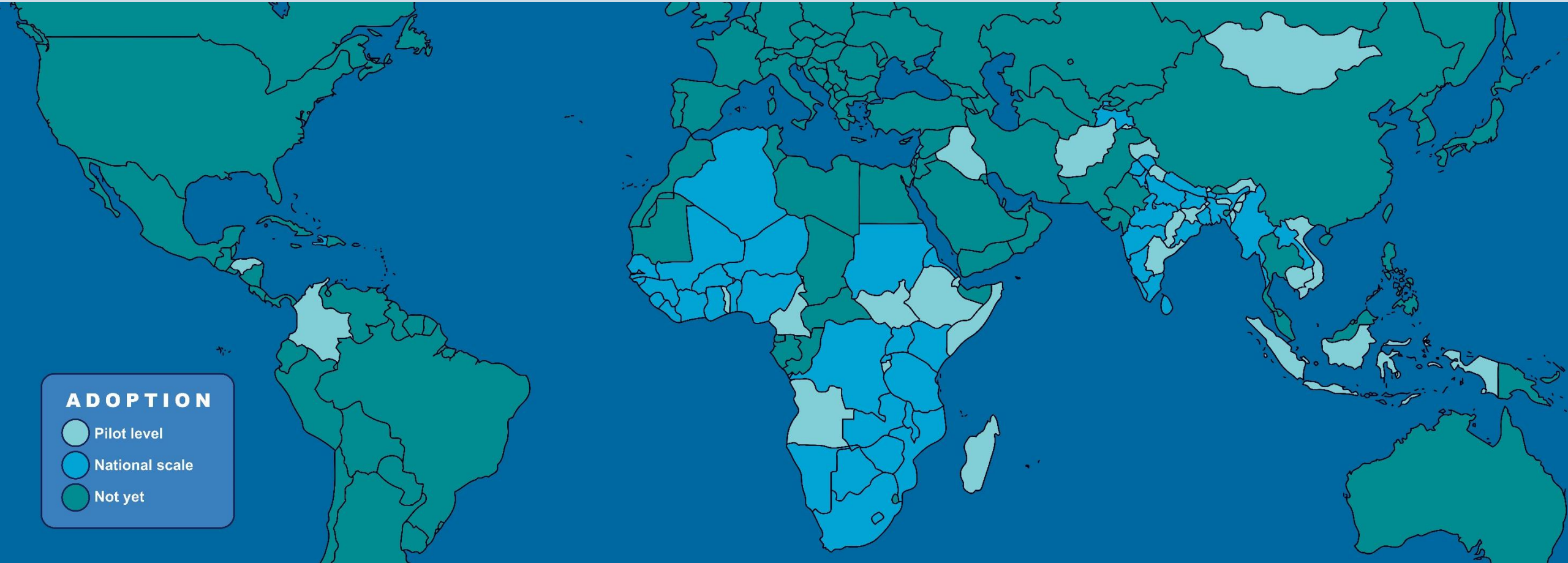


- Multidimensional data analysis from diverse sources
- Google Maps and Open Street Layers for geospatial analysis
- Comparison of aggregate data with events, such as survey data overlaid with population-level statistics

## Growth in DHIS 2 MoH implementations 2006-2017



# DHIS 2 Global Coverage



Read more on [dhis2.org/inaction](https://dhis2.org/inaction) and [facebook.com/dhis2](https://facebook.com/dhis2)

# International NGOs and Organizations

Population Services Int (PSI)

Médecins Sans Frontières (MSF)

Int. Rescue Committee (IRC)

Int. Planned Parenthood Fed (IPFP)

ICAP Columbia University

IMA World Health (IMA)

Management Sciences for Health (MSH)

EngenderHealth

Marie Stopes International (MSI)

FHI 360

Oxfam

Helen Keller Int (HKI)

WHO

International Medical Corps (IMC)

Norwegian Refugee Council (NRC)

JHPIEGO

Save the Children

RTI International

Akros

Palladium

CARE International

Johns Hopkins University

Africare

American Leprosy Missions

Pathfinder

Path



# Role of University of Oslo

- Leads the development of DHIS 2 platform
  - Software releases and support documentation
- Research program on HIS strengthening
- Local and regional capacity building
  - Regional DHIS 2 academy - <http://dhis2.org/academy>
  - International Doctoral and Masters programs
- Build community around DHIS 2 use
  - Support an open and engaged community around DHIS 2 that helps improve its use and relevance to countries

# Types of Family Planning Data

## National

- Aggregate Register based data
- FP2020 Measurement indicators 9-12\*

## NGOs

- Aggregate, Event and Tracker: Mix of register and client-based data
- FP2020 Measurement indicators 9-18 (-12)\*
- Service Provision Quality Assessments

[\\*http://progress.familyplanning2020.org/en/measurement-section/measuring-progress](http://progress.familyplanning2020.org/en/measurement-section/measuring-progress)

# Opportunities

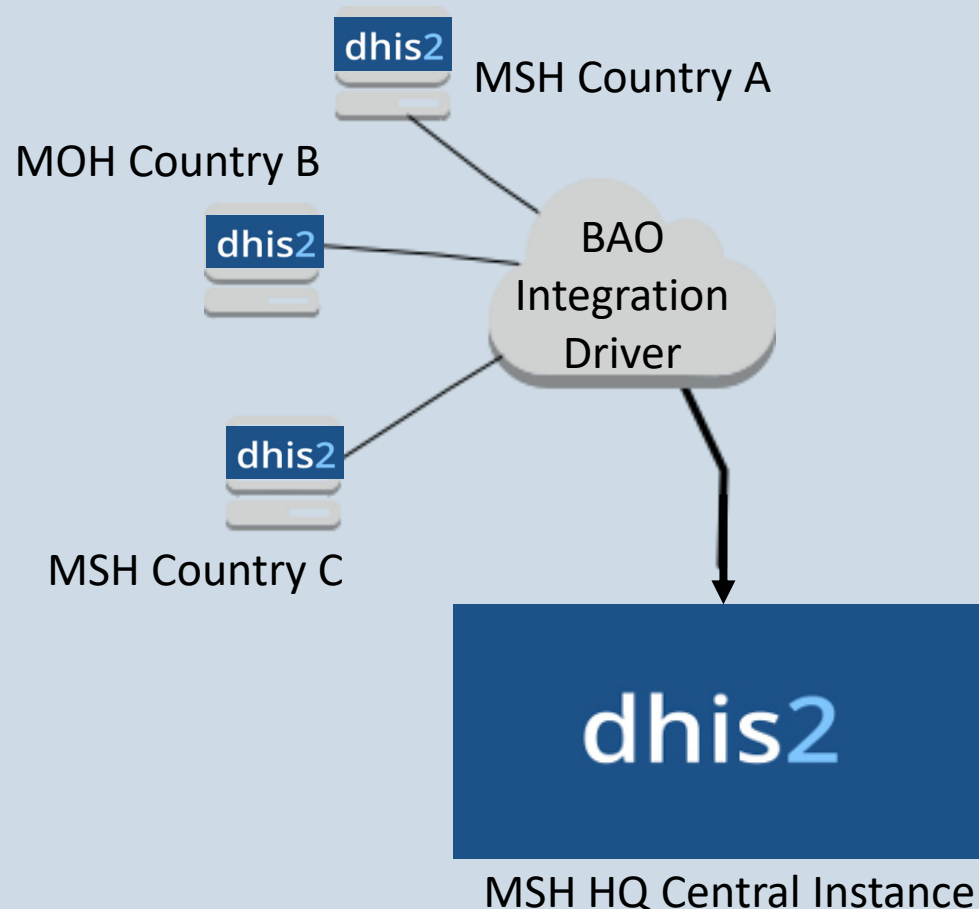
Critical mass convergence  
around one system

Data Alignment

Data exchange and  
Integration

# Case Study: MSH – MoH Integration

Central headquarter level instance pulling core data from the national system into a headquarters level instance using **BAO Integration Driver**



1. Push or pull data between DHIS 2 instances in automate fashion
2. Data collected for country specific programs in country and used there for decision making
3. Key metrics/indicators compiled automatically to HQ instance for use at MSH HQ
4. Allows great flexibility for countries to manage projects while HQ has eye on metrics important to them

# Challenges

Data alignment – who centrally manages this?

Data governance

Integration of systems brings additional technical and resourcing challenges



Thank You

[nhobby@baosystems.com](mailto:nhobby@baosystems.com)

[www.baosystems.com](http://www.baosystems.com)

[www.dhis2.org](http://www.dhis2.org)